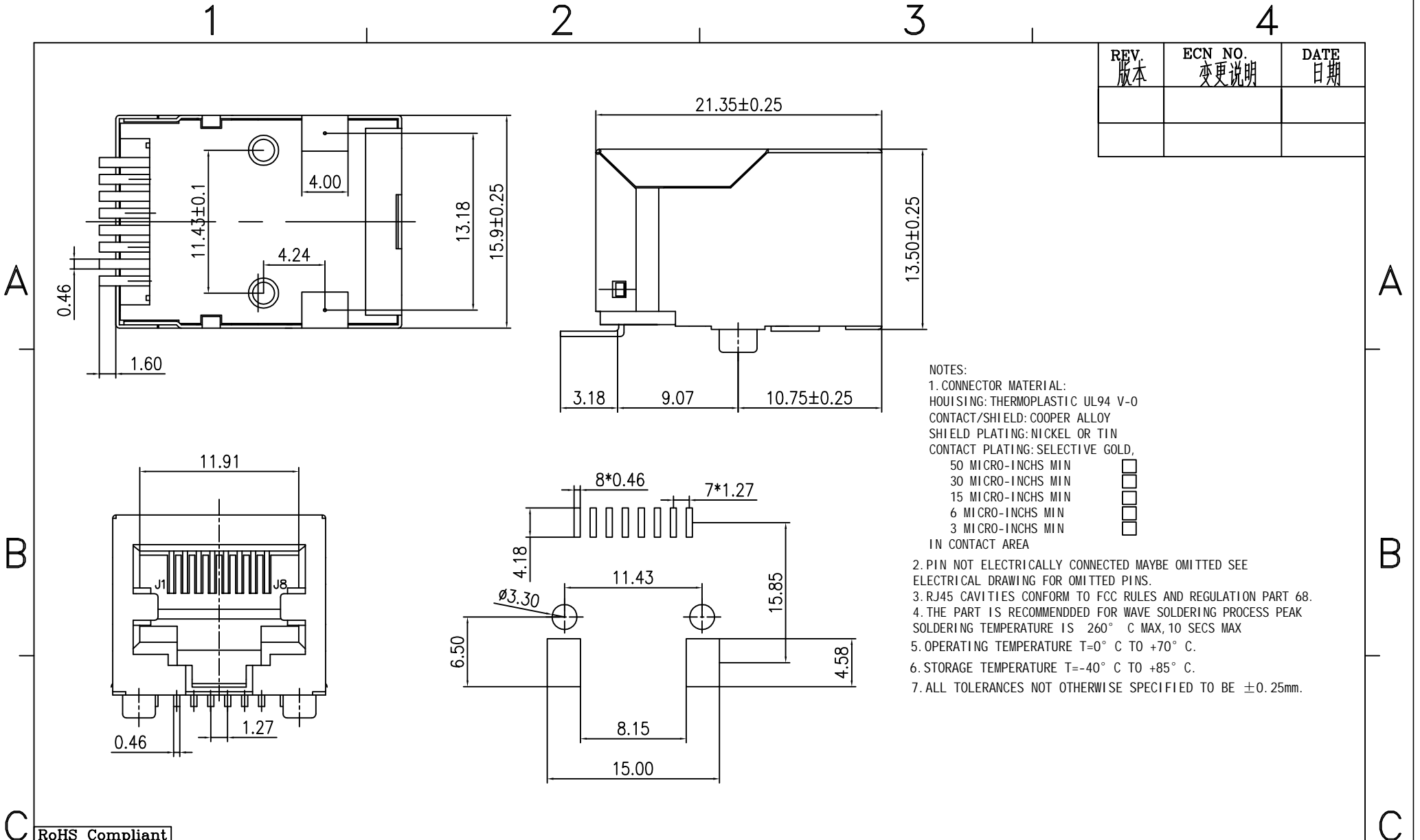


REV. 版本	ECN NO. 变更说明	DATE 日期



NOTES:  
 1. CONNECTOR MATERIAL:  
 HOUSING: THERMOPLASTIC UL94 V-0  
 CONTACT/SHIELD: COOPER ALLOY  
 SHIELD PLATING: NICKEL OR TIN  
 CONTACT PLATING: SELECTIVE GOLD,  
     50 MICRO-INCHS MIN   
     30 MICRO-INCHS MIN   
     15 MICRO-INCHS MIN   
     6 MICRO-INCHS MIN   
     3 MICRO-INCHS MIN   
 IN CONTACT AREA

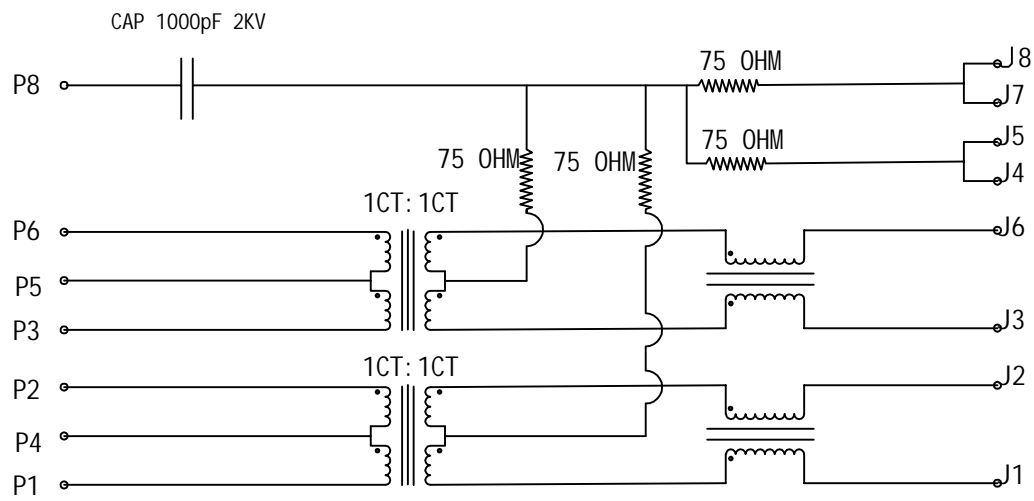
- 2. PIN NOT ELECTRICALLY CONNECTED MAYBE OMITTED SEE ELECTRICAL DRAWING FOR OMITTED PINS.
- 3. RJ45 CAVITIES CONFORM TO FCC RULES AND REGULATION PART 68.
- 4. THE PART IS RECOMMENDED FOR WAVE SOLDERING PROCESS PEAK SOLDERING TEMPERATURE IS 260° C MAX, 10 SECS MAX
- 5. OPERATING TEMPERATURE T=0° C TO +70° C.
- 6. STORAGE TEMPERATURE T=-40° C TO +85° C.
- 7. ALL TOLERANCES NOT OTHERWISE SPECIFIED TO BE ±0.25mm.

RoHS Compliant

<b>Coorle 库乐科技</b>				<b>TOLERANCES</b> 0~15 ±0.15 15~30 ±0.20 30~50 ±0.25 50~ ±0.30 ANGLES: ±1°	<b>MATERIAL:</b>	<b>Designed:</b>	<b>NAME:</b> 5921 SMT 8P8CS 100M		
	<b>A4</b>	<b>SCALE</b>	<b>UNIT</b>	<b>CUSTOMER:</b>	<b>FINISH:</b>	<b>Checked:</b>	<b>DWG NO:</b> TC1130		<b>REV:</b>
	<b>SIZE</b>	1:1	mm				<b>PAGE 1 OF 2</b>		

1 2 3 4

REV. 版本	ECN NO. 变更说明	DATE 日期



- 1.0 TURN RATIO: (P2-P3): (J1-J2) : 1: 1±3%
- (P4-P5): (J3-J6) : 1: 1±3%
- 2.0 INDUCTANCE: (P2-P3) AND (P4-P5) 350uH MIN @0.1V, 100KHZ, 8mA DC BIAS
- 3.0 LEAKAGE INDUCTANCE: P2-P3(WITH J1 AND J2 SHORT) : 0.35uH MAX @1MHZ
- P4-P5(WITH J3 AND J6 SHORT) : 0.35uH MAX @1MHZ
- 4.0 INTERWINDING CAPACITANCE: (P2-P3): (J1-J2) : 35pF MAX @ 1MHZ
- (P4-P5): (J3-J6) : 35pF MAX @ 1MHZ
- 5.0 DC RESISTANCE: (J1-J2): (J3-J6): 1.2 OHMS MAX
- 6.0 RETURN LOSS: 1MHZ TO 30MHZ : -18dB MIN
- 30MHZ TO 80MHZ : -12dB MIN
- 7.0 DIELECTRIC WITHSTAND: (P2-P3): (J1-J2) : 1500VAC OR 2250VDC
- (P4-P5): (J3-J6) : 1500VAC OR 2250VDC
- 8.0 INSERTION LOSS: 100KHZ TO 100MHZ : -1.2dB MAX
- 9.0 CROSS TALK: 1MHZ TO 100MHZ : -33dB TYP
- 10.0 COMMON TO COMMON MODE ATTENUATION: 30MHZ TO 100MHZ : -35dB TYP

A

A

B

B

C

C

RoHS Compliant

<h2 style="margin: 0;">Coorle 库乐科技</h2>				<b>TOLERANCES</b> 0~15 ±0.15 15~30 ±0.20 30~50 ±0.25 50~ ±0.30 ANGLES: ±1°		<b>MATERIAL:</b> Designed:		<b>NAME:</b> 5921 SMT 8P8CS 100M		
				<b>FINISH:</b> Checked:		<b>DWG NO:</b> TC1130		<b>REV:</b>		
 FIRST ANGLE PROJECTION	<b>A4</b> SIZE	<b>SCALE</b> 1:1	<b>UNIT</b> mm	<b>CUSTOMER:</b>		<b>PAGE 2 OF 2</b>		<b>Approved:</b>	<b>PART NO:</b> CP-1B007M-020	00

1 2 3 4